



Thermo Scientific Dionex Chromeleon  
Chromatography Data System

# Simply intelligent Chromeleon goes MS

**Thermo**  
SCIENTIFIC

# Operational Simplicity



## Chromeleon goes MS

The new 7.2 release of Thermo Scientific™ Dionex™ Chromeleon™ Chromatography Data System (CDS) software is the first CDS that combines separation (GC/IC/LC) and Mass Spectrometry (MS) in an enterprise (client/server) environment.

The Chromeleon CDS support for GC-MS uses native Thermo Scientific MS drivers for instrument control and extends the necessary MS-specific data views, data processing, and reporting capabilities. This merges the benefits of Chromeleon CDS with our leading GC-MS instrumentation and application expertise for a superior answer to the productivity challenges in the analytical laboratory.

## Key Benefits

By extending Chromeleon CDS beyond chromatography into MS, you can now streamline your chromatography and MS quantitation workflows in one application.

- Reduced training effort for your lab staff – one single software package instead of several.
- Prevention from data loss during a network outage through secure XVault™ infrastructure.
- One set of methods, one set of reports and one central location for chromatography and MS data.
- Comprehensive suite of Chromeleon CDS productivity tools from dynamic data linking, instant processing, to SmartPeaks™ detection - now available for MS.
- Spreadsheet-based, easily customizable, flexible and powerful Chromeleon CDS reporting.

Ultimately this lets you use your MS like any other routine detector.

- Enterprise architecture
- Unparalleled ease-of-use
- Multi-vendor instrument control
- Comprehensive compliance tools

- >30 years of MS experience
- Leading-edge MS portfolio
- Unparalleled MS application expertise



**First CDS fully integrating MS into  
routine and quantitative workflows**

# Key Features

- Full control of the Thermo Scientific™ ISQ™ Single Quadrupole GC-MS system and Thermo Scientific™ TSQ™ 8000 Triple Quadrupole GC-MS/MS systems, including tuning and instrument calibration.
- MS-specific data views such as TIC, with Mass Spectra (Figure 1), quantitation channels, MS component traces, and XIC (Figure 2).
- NIST library searching including the direct import of a library search into your component tables (Figure 3).
- Seamless import of and central processing and reporting of Thermo Scientific™ Xcalibur™ .raw data, which also enables data processing and reporting for all Thermo Scientific LC-MS/MS systems.
- New consolidated report tables catering to multiple traces and large data sets allow users to quickly and easily evaluate and report MS data.
- Enables architecture for MS including remote instrument access and data processing, full 21 CFR Part 11 GMP/GLP compliance, and fully scalable architecture.
- MS data processing on a component-by-component basis using MS-specific Genesis and ICIS detection algorithms, and all Chromeleon CDS quantitation tools and options.

Figure 1: Extraction and display of MS data in Chromeleon 7.2 CDS.

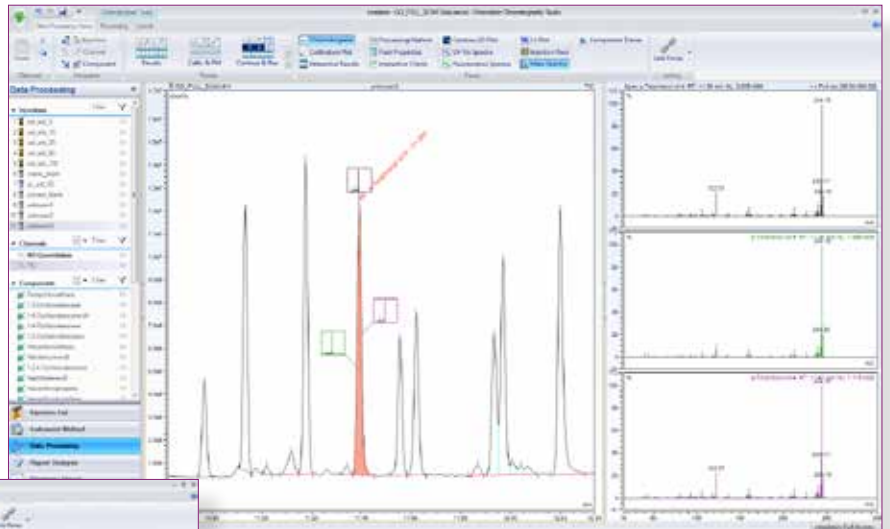


Figure 2: New component centric data view for MS data in Chromeleon 7.2 CDS.

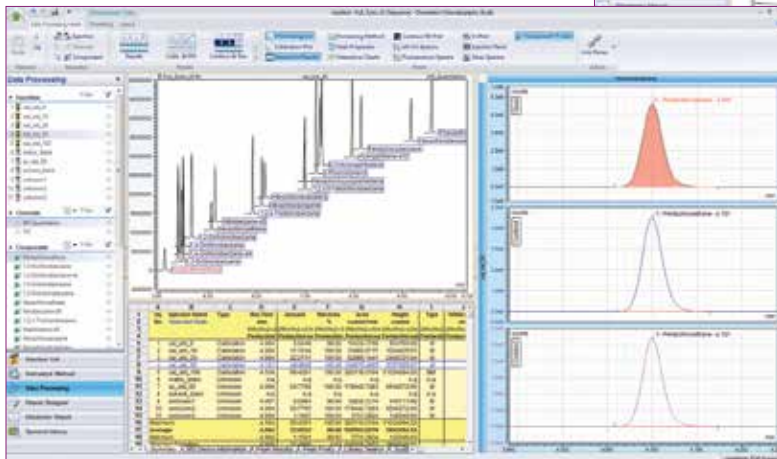
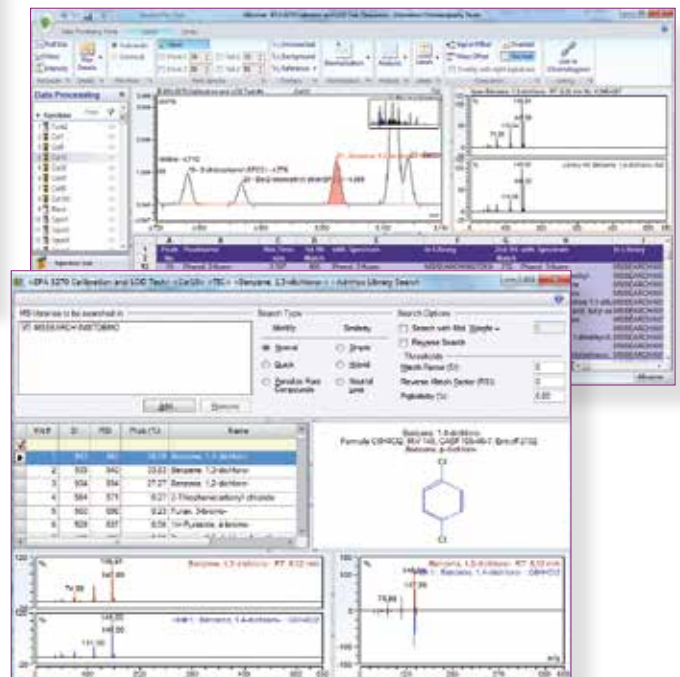


Figure 3: NIST library search in Chromeleon 7.2 CDS.

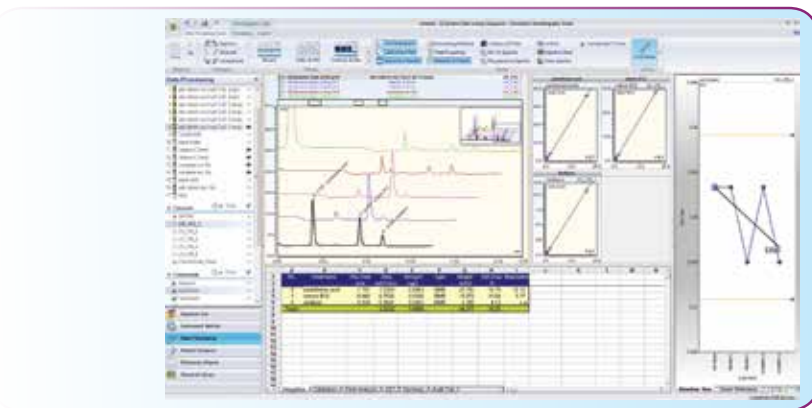




# Additional highlights in Chromeleon 7.2 CDS

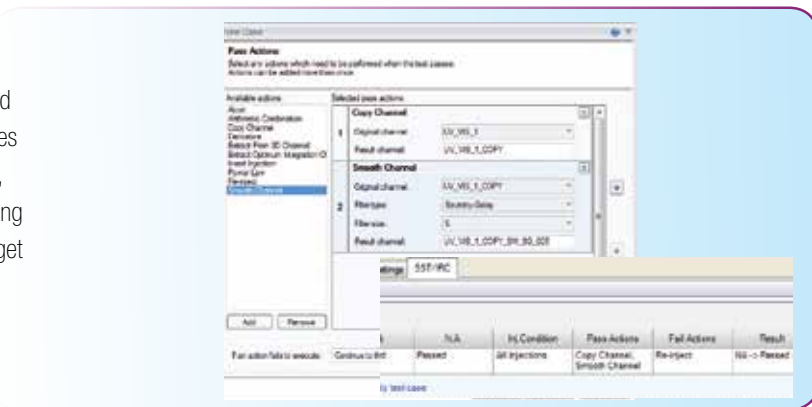
## Linking of Panes:

By linking the active Chromatography Studio panes to the chromatogram, data evaluation becomes simple. Calibration plots, interactive charts and reports are linked to the active chromatogram displaying only data relevant to the current zoom or selected peaks, providing the analyst with all the information needed for fast, easy data evaluation.



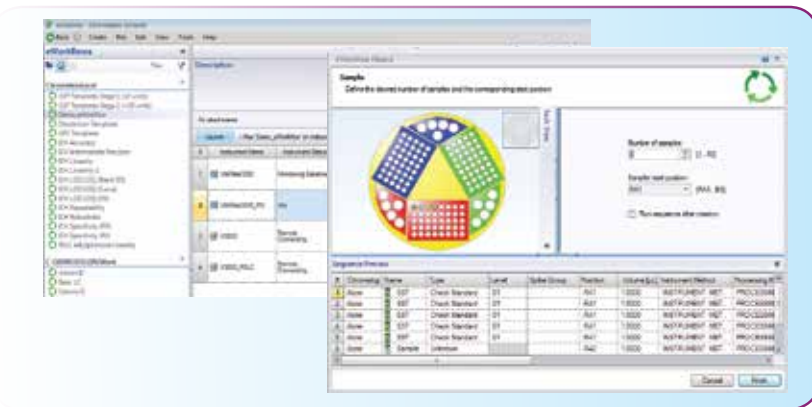
## Intelligent Run Control (IRC):

Gets you from samples to results even quicker! IRC enables you to have the software automatically react to passed or failed user-defined conditions during the sequence run. IRC in Chromeleon CDS provides many different options including re-injections of the current injection, all injections, restarting from an earlier point in the sequence, or adding extra injections. It also includes built-in error handling, ensuring you get more right first time analyses.



## eWorkflows:

The Chromeleon 7.2 CDS eWorkflow™ framework captures all the unique aspects of a chromatography workflow, and enables you to reduce the number of steps needed to perform your routine MS workflows while ensuring that procedural rules and guidelines are followed accurately. With just a few mouse clicks, any user can create and run analyses on all your chromatography instrumentation including MS.



**Chromeleon 7.2 CDS gives superior data processing and automation capabilities, boosting your overall lab productivity.**

For more information, please visit [thermoscientific.com/chromeleon](http://thermoscientific.com/chromeleon)

[www.thermoscientific.com/dionex](http://www.thermoscientific.com/dionex)

©2013 Thermo Fisher Scientific Inc. All rights reserved. ISO is a trademark of the International Standards Organization. All other trademarks are the property of Thermo Fisher Scientific Inc. and its subsidiaries. Specifications, terms and pricing are subject to change. Not all products are available in all countries. Please consult your local sales representative for details.



Thermo Fisher Scientific, Sunnyvale, CA  
USA is ISO 9001:2008 Certified.

**Australia** +61 3 9757 4486  
**Austria** +43 1 333 50 34 0  
**Belgium** +32 53 73 42 41  
**Brazil** +55 11 3731 5140  
**China** +852 2428 3282

**Denmark** +45 70 23 62 60  
**France** +33 1 60 92 48 00  
**Germany** +49 6126 991 0  
**India** +91 22 6742 9494  
**Italy** +39 02 51 62 1267

**Japan** +81 6 6885 1213  
**Korea** +82 2 3420 8600  
**Netherlands** +31 76 579 55 55  
**Singapore** +65 6289 1190  
**Sweden** +46 8 473 3380

**Switzerland** +41 62 205 9966  
**Taiwan** +886 2 8751 6655  
**UK/Ireland** +44 1442 233555  
**USA and Canada** +847 295 7500

**Thermo**  
SCIENTIFIC  
Part of Thermo Fisher Scientific